

A liquid bait for the reduction of reproductive capacity in Norway and roof rats.

Keep Out of Reach of Children
CAUTION

Active Ingredients:

4-Vinylcyclohexene diepoxide..0.09604%

Triptolide0.00118%

Other Ingredients.....99.90278%

Total: 100.0000%

EPA Reg. No. 91601-1

EPA Est. No. 91601-AZ-1

Net Contents:

Bell Evo 13.53 fl. oz. (400 ml)

JT Eaton 18.59 fl. oz. (550 ml)

INTENDED FOR PROFESSIONAL USE ONLY.

STORAGE AND DISPOSAL

Do not contaminate water, food or feed by storage or disposal. **Storage:** Store only in original, tightly secured, bait tank in indoors, at room temperature, inaccessible to children, pets, livestock, and other non-target animals.

Disposal: Do not re-use empty tanks.

If empty: Place container in trash or offer for recycling. **If partly filled:** Cap the tank and place in the trash container or recycling.

Container Handling: Non-refillable tank.

Dispose of tanks by recapping and placing in trash can or recycling or an approved waste disposal facility.

FIRST AID

- If on skin or clothing:**
- Take off contaminated clothing.
 - Rinse skin immediately with plenty of water for 15-20 minutes.
 - Call a poison control center or doctor for treatment advice.

Note to Physician or Veterinarian:

This product has been formulated for fertility control in rats. It may possibly induce transient infertility in small male and female mammals capable of reproduction.

Have the product container or label with you when calling a poison control center or doctor or going for treatment.

PRECAUTIONARY STATEMENTS
Hazards to Humans and Domestic Animals

CAUTION. Avoid contact with skin or clothing. Wash thoroughly with soap and water after handling and before eating, drinking, chewing gum, using tobacco or using the toilet.

Personal Protective Equipment: Wear protective nitrile gloves \geq 14 mils or butyl rubber \geq 14 mils, long sleeved shirts, and long pants when handling this product.

Treatment for Pet Ingestion: If animal consumes bait, and adverse health effects are observed, call a veterinarian.

DIRECTIONS FOR USE

READ THIS LABEL: Read label attached to product. Follow all use directions and use precautions. Use only for sites, pests, and application methods described on this label. It is a violation of Federal law to use this product in a manner inconsistent with its labeling.

FOR INDOOR NON-FOOD USE AND EXTERNAL PERIMETER TREATMENT ONLY: For use inside and within 1 ft around external perimeters of transit systems, public and private buildings, commercial residential structures, and/or other man-made structures.

USE RESTRICTIONS:

1. Store unused bait inserts out of reach of children, pets, and livestock.
2. Bait stations must not be placed in areas where the contamination of food or surfaces that come in direct contact with food is possible.
3. Apply respective bait inserts in a JT Eaton 903TP tamper resistant or Bell Labs PROTECTA EVO Express bait stations only.
4. To avoid damage to the bait station, do not use bait stations in areas open to hooved livestock or potentially destructive wildlife.
5. Do not place bait stations beyond 1 ft of the exterior perimeter of man-made structures.
6. Bait station must be secured when placed in areas where children, pets, non-target animals (including livestock), and when placed within 1 ft of the exterior perimeter of a building or transit station, or the general public may be present.
7. Do not place bait stations where they are likely to become submerged or inundated with water (e.g., below the mean higher high-water mark in tidal areas, in storm sewers, or in catch basins), or on an uneven surface.
8. Do not dilute or add anything to the product.

SELECTION OF TREATMENT AREAS: Determine areas where rats are most likely to find and consume bait. It is recommended that chew cards or non-toxic bait blocks be used to determine these locations. Reassess, if foraging locations change (e.g., due to seasonal changes or construction).

APPLICATION DIRECTIONS: Place bait station on a firm, level surface in an area of rat activity. Maintain an uninterrupted supply of bait in bait stations. Keep filled bait station clean, dry and on a level surface. Check bait stations and replace bait insert as necessary, or at least every 1 month. Properly dispose of any leftover bait, as instructed in the Storage and Disposal section of this label.

Installing Bait Inserts in Bait Stations:

To use new bait insert (tank and feeder tray):

1. Remove cap, keeping the opening down, screw tank onto tray while keeping it level. Do not overtighten.
2. The flow of liquid should begin immediately. Do not squeeze tank to encourage flow of bait.
3. Place insert into the appropriate side of the bait station (R or L, as applicable).

To reuse feeder tray with new tank:

1. Remove insert (tank and tray) from bait station. Keep insert level to limit spills.
2. Slowly rotate insert away from you, as indicated by arrow on top of the tank, until feeder tray is on top.
3. Hold insert in this position for approximately 5 seconds to ensure all bait flows back into tank.
4. Unscrew feeder tray from tank and flip tray over until it is in upright position.
5. Remove cap on the new tank and keeping the opening down, screw the tank onto the tray. Do not overtighten.
6. The flow of liquid should begin immediately. Do not squeeze tank.
7. Place insert into the appropriate side of the bait station (R or L, as applicable).
8. Screw new tank cap onto old tank and dispose in trash.

DISCLAIMER

To the extent consistent with applicable law, seller makes no warranty, expressed or implied, concerning the use of this product other than indicated on the label. Buyer assumes all risk of use and/or handling of this material when such use and/or handling is contrary to label instructions.

**ACCEPTED
FOR REGISTRATION**

NOV 05 2018

New York State Department
of Environmental Conservation
Division of Materials Management
Pesticide Product Registration

**Classified for
"RESTRICTED USE"
in New York State
under 6NYCRR Part 326**

ContraPest[®]



Active Ingredients:

4-Vinylcyclohexene diepoxide.....0.09604%
Triptolide0.00118%
Other Ingredients.....99.90278%
Total: 100.0000%

See full product label for First Aid and Directions for Use. Directions for Use: For use in JT Eaton 903TP bait station only. Applicator must be in possession of the full label at the time of application. Replace at least every 1 month. **To use new bait insert (tank and feeder tray):** 1. Remove cap, keeping the opening down, screw tank onto tray while keeping it level. Do not overtighten. 2. The flow of liquid should begin immediately. Do not squeeze tank to encourage flow of bait. 3. Place insert into the appropriate side of the bait station (R or L). **To reuse feeder tray with new tank:** 1. Remove insert (tank and tray) from bait station. Keep insert level to limit spills. 2. Slowly rotate insert away from you, as indicated by arrow on top of the tank, until feeder tray is on top. 3. Hold insert in this position for approximately 5 seconds to ensure all bait flows back into tank. 4. Unscrew feeder tray from tank and flip tray over until it is in upright position. 5. Remove cap on the new tank and keeping the opening down, screw the tank onto the tray. Do not overtighten. 6. The flow of liquid should begin immediately. Do not squeeze tank. 7. Place insert into the appropriate side of the bait station (R or L). 8. Screw new tank cap onto old tank and dispose in trash.

Manufactured by:
SenesTech, Inc
3140 N. Caden Ct, Ste 1
Flagstaff, AZ 86004

EPA Reg. No. 91601-1
EPA Est. No. 91601-AZ-1
Patent: 9,956,235

Disposal:
Do not re-use empty bait insert.
If empty: Place container in trash or offer for recycling.
If partly filled: Cap the container and place in the trash.

Batch Code:
See stamp

INTENDED FOR PROFESSIONAL USE ONLY

Keep Out of Reach of Children
CAUTION
Net Contents: 18.59 fl. oz. (550 ml)
CP-10-16-18

Actual: 4.875" x 0.931"

Intended for Professional Use Only.	Keep Out of Reach of Children CAUTION	senestech <small>sound science. effective solutions.</small>	EPA Reg. No. 91601-1 EPA Est. No. 91601-AZ-1 Patent 9,956,235
	Active Ingredients: 4-Vinylcyclohexene diepoxide.....0.09604% Triptolide0.00118% Other Ingredients99.90278% Total: 100.0000%	ContraPest®	Net Contents: 13.53 fl. oz. (400 ml) Batch Code: See Stamp CP-10-16-2018
		Manufactured by: SenesTech, Inc 3140 N. Caden Ct, Ste 1 Flagstaff, AZ 86004	



Pantone 3252 C



Pantone 7469 C



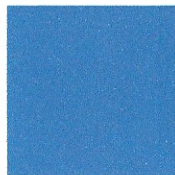
Pantone Black

Actual: 3.96" x 1.164"

See full product label for First Aid and Directions for Use. Directions for Use: For use in Bell Labs PROTECTA EVO Express bait station only. Applicator must be in possession of the full label at the time of application. Replace at least every 1 month. **To use new bait insert (tank and feeder tray):** 1. Remove cap, keeping the opening down, screw tank onto tray while keeping it level. Do not overtighten. 2. The flow of liquid should begin immediately. Do not squeeze tank to encourage flow of bait. **To reuse feeder tray with new tank:** 1. Remove insert (tank and tray) from bait station. Keep insert level to limit spills. 2. Slowly rotate insert away from you, as indicated by arrow on top of the tank, until feeder tray is on top. 3. Hold insert in this position for approximately 5 seconds to ensure all bait flows back into tank. 4. Unscrew feeder tray from tank and flip tray over until it is in upright position. 5. Remove cap on the new tank and keeping the opening down, screw the tank onto the tray. Do not overtighten. 6. The flow of liquid should begin immediately. Do not squeeze tank. 7. Screw new tank cap onto old tank and dispose in trash. **Disposal:** Do not re-use empty bait insert. **If empty:** Place container in trash or offer for recycling. **If partly filled:** Cap the container and place in the trash.



Pantone 3252 C



Pantone 7469 C



Pantone Black